

1/2"

C

6274

PSFMPEZ

5-1/4"

7-1/4"

10"

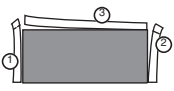
10-1/2"

See Reverse Side For Easy Opening Instructions

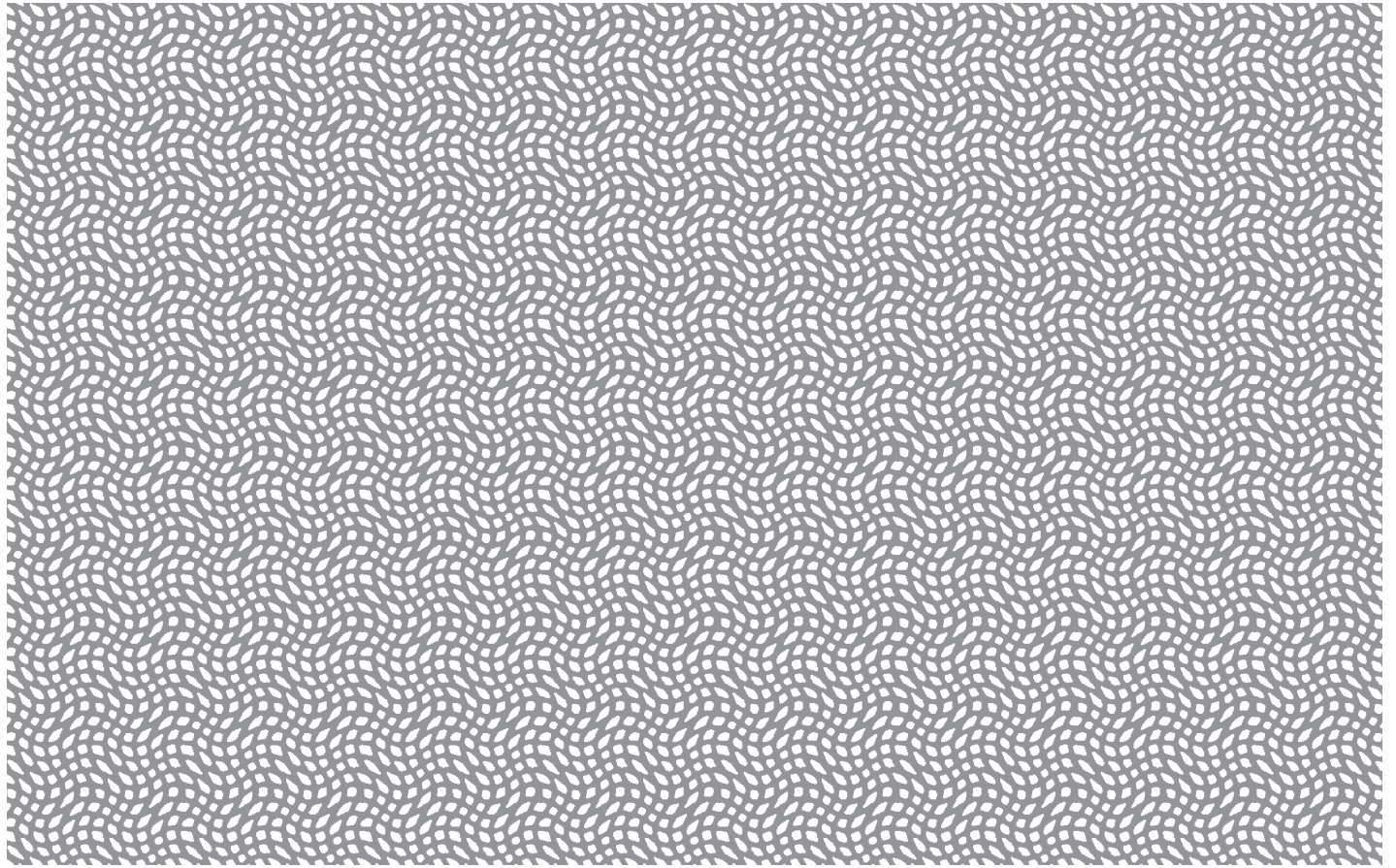
11"

SEE OTHER SIDE FOR
OPENING INSTRUCTIONS

SEE OTHER SIDE FOR
OPENING INSTRUCTIONS

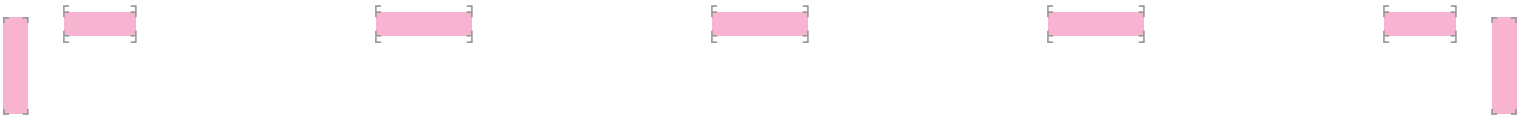


REMOVE SIDE EDGES FIRST
THEN FOLD AND TEAR THIS STUB ALONG PERFORATION



REMOVE THESE EDGES FIRST
FOLD, CREASE AND TEAR ALONG PERFORATION

REMOVE THESE EDGES FIRST
FOLD, CREASE AND TEAR ALONG PERFORATION



D

